

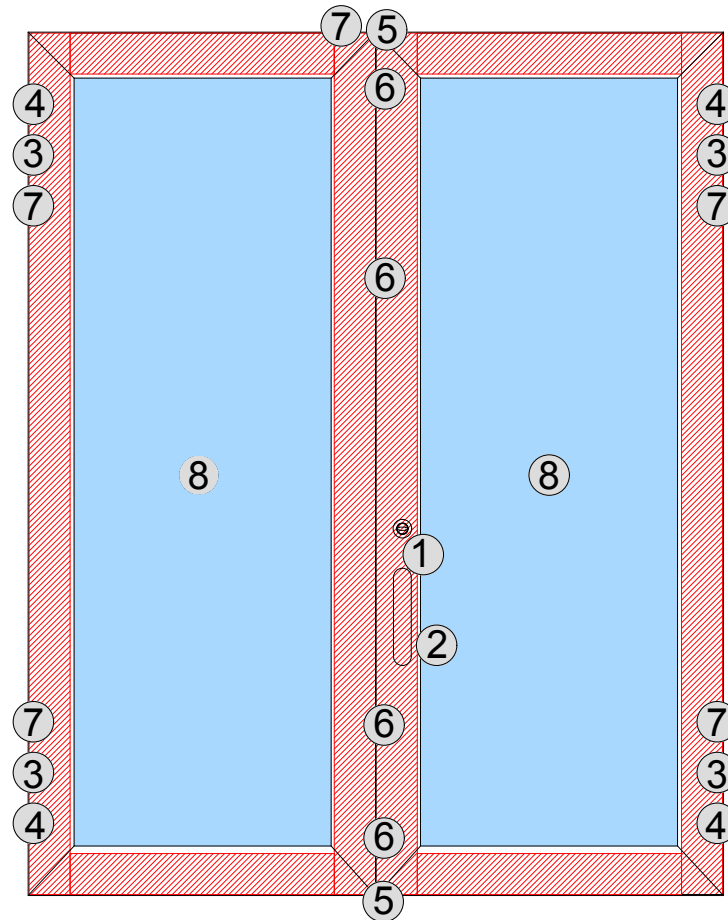



IKONA BULLET 3300J
BULLETPROOF CERTIFIED CLASS FB6/NS



IKONA BULLET 3300J

Main Characteristics

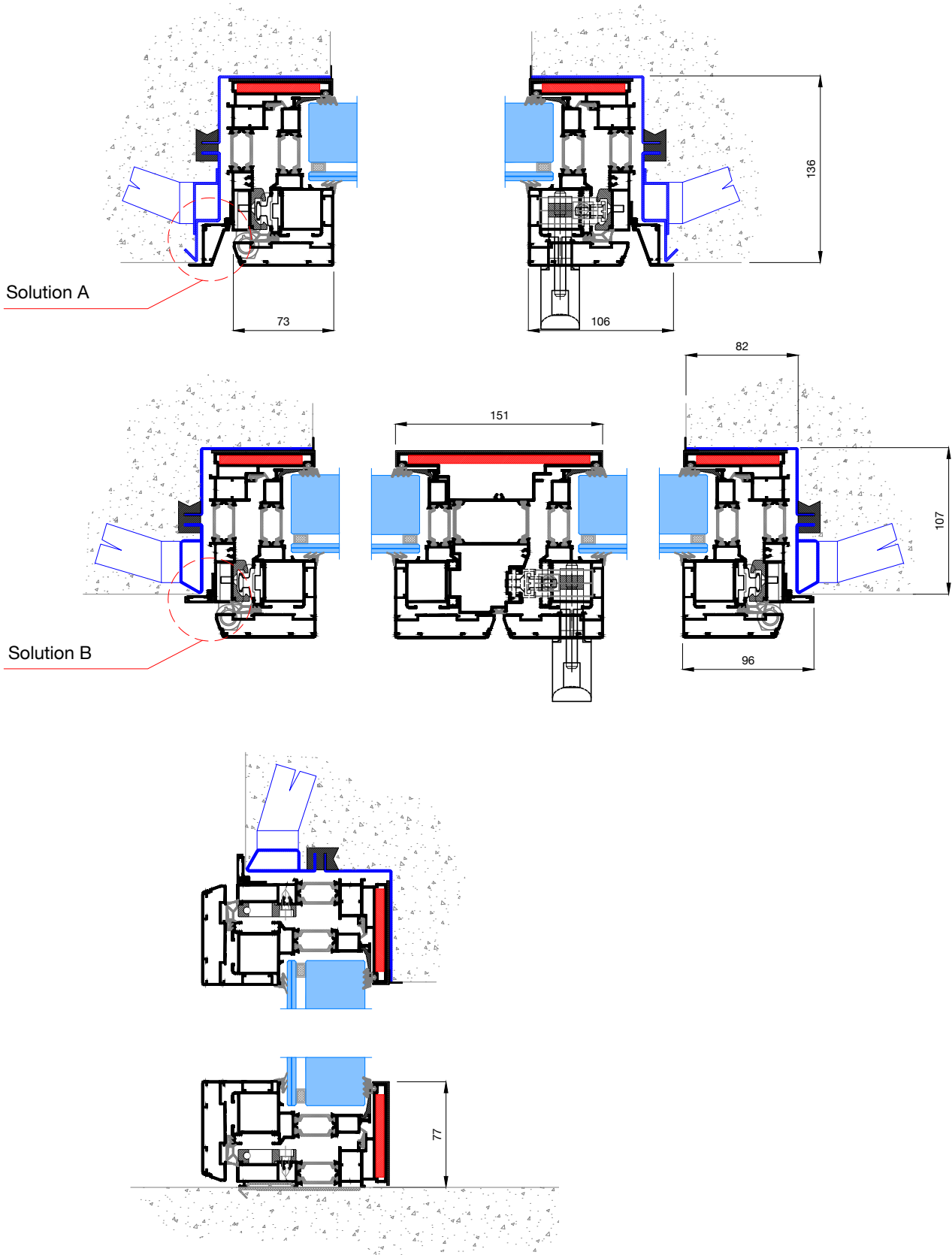


-  Armor 5,9 mm thick steel BALLISTIC REAX RAMOR 550
- 1** Half security cylinder
- 2** Handle with breaking system controlled
- 3** Concealed burglary hinges in extruded aluminum
- 4** Patented tear-proof brackets in extruded aluminum
- 5** Active blinding and closing inf./sup. 4 mm thick stainless steel
- 6** Burglar-resistant third locks
- 7** Safety perimeter pins in stainless steel, diameter 12 mm
- 8** Armored glass anticrime class P8B / BR6-NS (in glass chamber)



IKONA BULLET 3300J

Vertical and horizontal sections





IKONA BULLET 3300J

Description of specifications

PROFILES

Profiles extruded aluminium alloy 6060 as UNI 9006/1 (88/90). The finishing state is T5

ARMOURING

Armored profiles with steel flat ballistic REAX RAMOR 550, 5,9 mm thick, placed on the outside of the frame profile to protect accessories and insertion of armored glass

ACCESSORIES

- . Handle with cylinder and breaking system controlled
- . Lock with half security cylinder
- . Concealed burglary hinges in extruded aluminum
- . Patented tear-proof brackets in extruded aluminum
- . Active blinding and closing inf./sup. 4 mm thick stainless steel
- . Burglar-resistant third locks
- . Safety perimeter pins in stainless steel, diameter 12 mm
- . Gaskets in EPDM
- . Stainless steel screws

SPECIFICATIONS AND DIMENSIONS

Safety system composing of extruded aluminum profiles with thermal break section 111/136mm and completely overlapping both on the inside and outside. (Ginko Safe Design srl patent)

Thermal insulation made with 30mm polyamide spacers.

Available, both for doors and windows, with one door, two doors and fixed mirrors with the possibility to combine them between themselves

GLAZING

The Ikona Bullet 3300J series uses bulletproof armored glass in class BR6/NS and burglar-proof in class P8B

FINISHES

- . RAL, wrinkled and gothic colors are painted with thermosetting polyester powders and polymerised in the oven in compliance with the "Qualicoat" quality procedures.
- . Wood effects realized with sublimation film (heat transfer "heat transfer") in compliance with the "Qualideco" procedures
- . Anodic oxidation has a thickness class> of 15 microns

PERFORMANCE AND CERTIFICATIONS

. **BULLETPROOF CERTIFIED CLASS FB6/NS - BR6/NS (3300 joule)** (window 2 leafs) - standard UNI ENV 1522/1522:2000

. **BURGLAR-RESISTANT CLASS RC4** (window 2 leafs) - standard UNI ENV 1227/30:2011

. **AIR PERMEABILITY CLASS 4** - standard EN 12207

. **WATER TIGHTNESS CLASS 7A** - standard EN 12208

. **WIND LOAD RESISTANCE CLASS C5** - standard EN 12210

. **NOISE REDUCTION 44 Db** - standard EN 140-1 33

. **THERMAL INSULATION: Uw 1.6 W/m²K** (window 2 leafs) - **Uw 1.4 W/m²K** (window 1 leaf)

Values achieved for a window with standard dimensions (1,23 (±25%) x 1,48(-25%)) regulations UNI EN 14351-1, double insulated glass Ug 1,1 W/m²K

Comply with CE-EN 13659

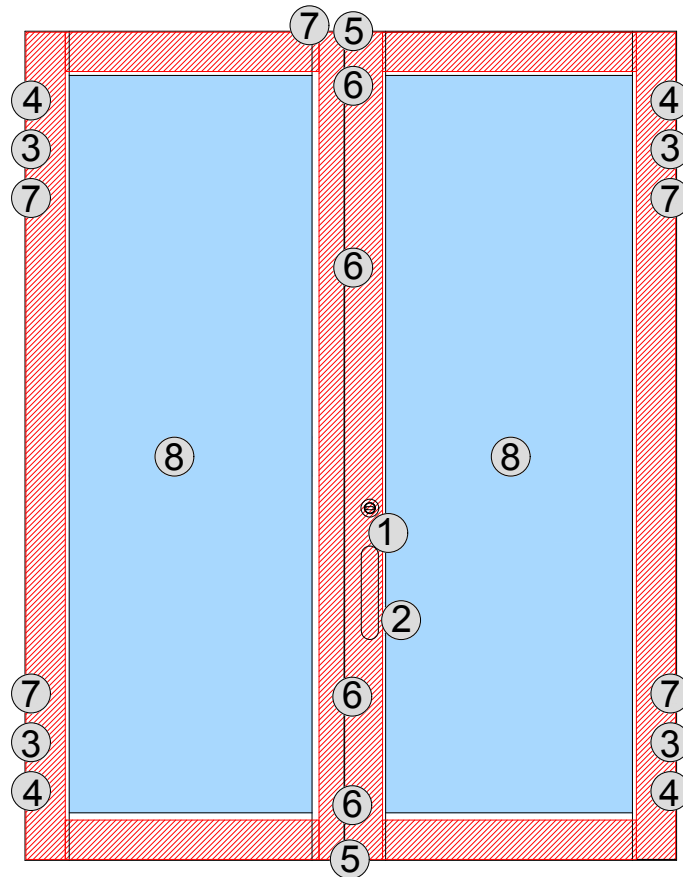



IKONA WOOD BULLET 3300J
BULLETPROOF CERTIFIED CLASS FB6/NS



IKONA WOOD BULLET 3300J

Main Characteristics

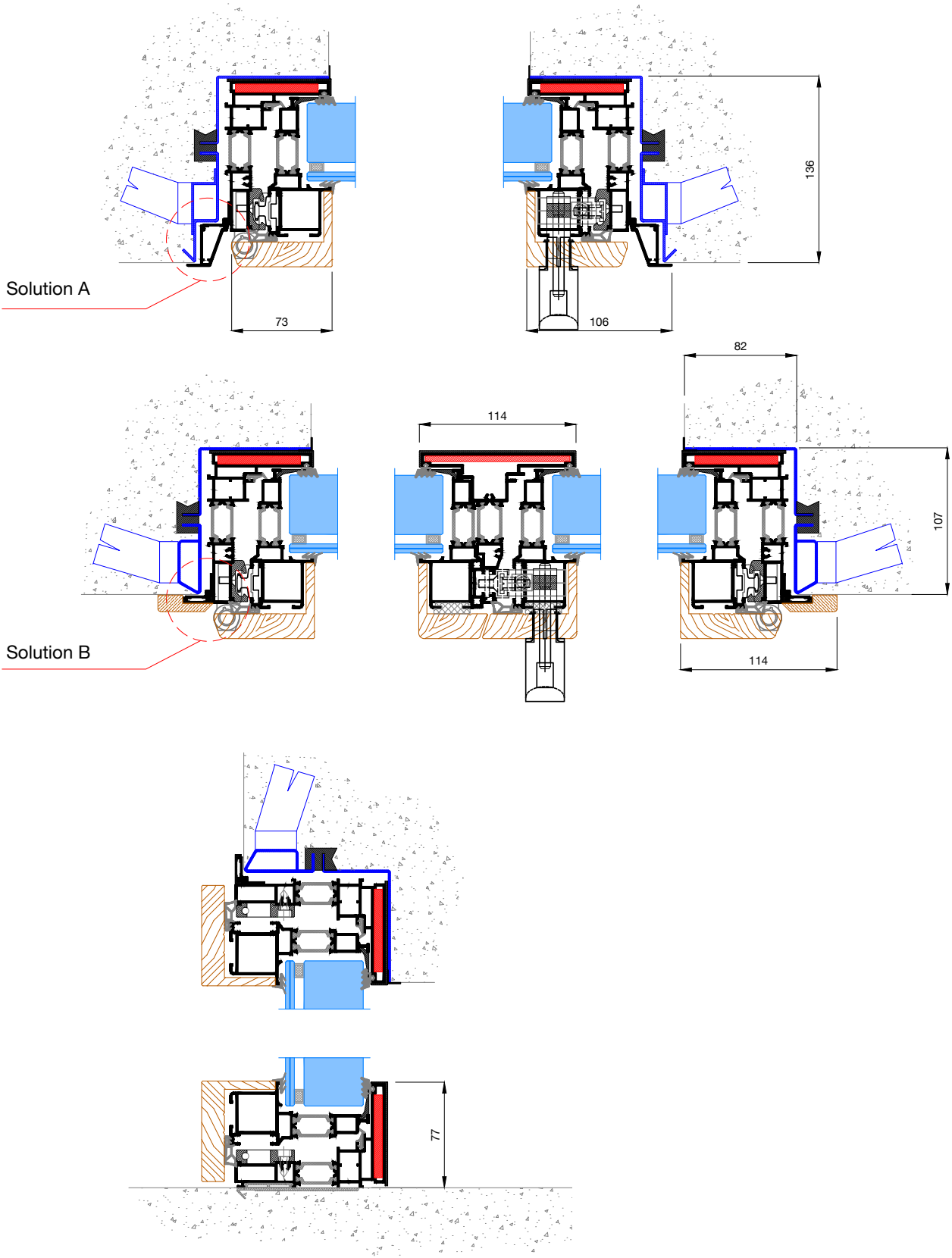


-  Armor 5,9 mm thick steel BALLISTIC REAX RAMOR 550
- 1** Half security cylinder
- 2** Handle with breaking system controlled
- 3** Concealed burglary hinges in extruded aluminum
- 4** Patented tear-proof brackets in extruded aluminum
- 5** Active blinding and closing inf./sup. 4 mm thick stainless steel
- 6** Burglar-resistant third locks
- 7** Safety perimeter pins in stainless steel, diameter 12 mm
- 8** Armored glass anticrime class P8B / BR6-NS (in glass chamber)



IKONA WOOD BULLET 3300J

Vertical and horizontal sections





IKONA WOOD BULLET 3300J

Description of specifications

PROFILES

Profiles extruded aluminium alloy 6060 as UNI 9006/1 (88/90). The finishing state is T5

ARMOURING

Armored profiles with steel flat ballistic REAX RAMOR 550, 5,9 mm thick, placed on the outside of the frame profile to protect accessories and insertion of armored glass

ACCESSORIES

- . Handle with cylinder and breaking system controlled
- . Lock with half security cylinder
- . Concealed burglary hinges in extruded aluminum
- . Patented tear-proof brackets in extruded aluminum
- . Active blinding and closing inf./sup. 4 mm thick stainless steel
- . Burglar-resistant third locks
- . Safety perimeter pins in stainless steel, diameter 12 mm
- . Gaskets in EPDM
- . Stainless steel screws

SPECIFICATIONS AND DIMENSIONS

Safety system composing of extruded aluminum profiles with thermal break section 111/136mm and completely overlapping both on the inside and outside. (Ginko Safe Design srl patent)

Thermal insulation made with 30mm polyamide spacers.

Available, both for doors and windows, with one door, two doors and fixed mirrors with the possibility to combine them between themselves

GLAZING

The Ikona Bullet 3300J series uses bulletproof armored glass in class BR6/NS and burglar-proof in class P8B

FINISHES

- . RAL, wrinkled and gothic colors are painted with thermosetting polyester powders and polymerised in the oven in compliance with the "Qualicoat" quality procedures.
- . Wood effects realized with sublimation film (heat transfer "heat transfer") in compliance with the "Qualideco" procedures
- . Anodic oxidation has a thickness class > of 15 microns
- . Internal covering in stained/lacquered solid ash wood

PERFORMANCE AND CERTIFICATIONS

. **BULLETPROOF CERTIFIED CLASS FB6/NS-BR6/NS (3300 joule)** (window 2 leaves)- standard UNI ENV 1522/1522:2000 - Window structure certified FB6/NS - Glass certification BR6/NS)

. **BURGLAR-RESISTANT CLASS RC4** (window 2 leaves) - standard UNI ENV 1227/30:2011

. AIR PERMEABILITY CLASS 4 - standard EN 12207

. WATER TIGHTNESS CLASS 7A - standard EN 12208

. WIND LOAD RESISTANCE CLASS C5 - standard EN 12210

. NOISE REDUCTION 44 Db - standard EN 140-1 33

. THERMAL INSULATION: Uw 1.4 W/m²K (window 2 leaves) - Uw 1.3 W/m²K (window 1 leaf)

Values achieved for a window with standard dimensions (1,23 (±25%) x 1,48(-25%)) regulations UNI EN 14351-1, double insulated glass Ug 1,1 W/m²K

Comply with CE-EN 13659